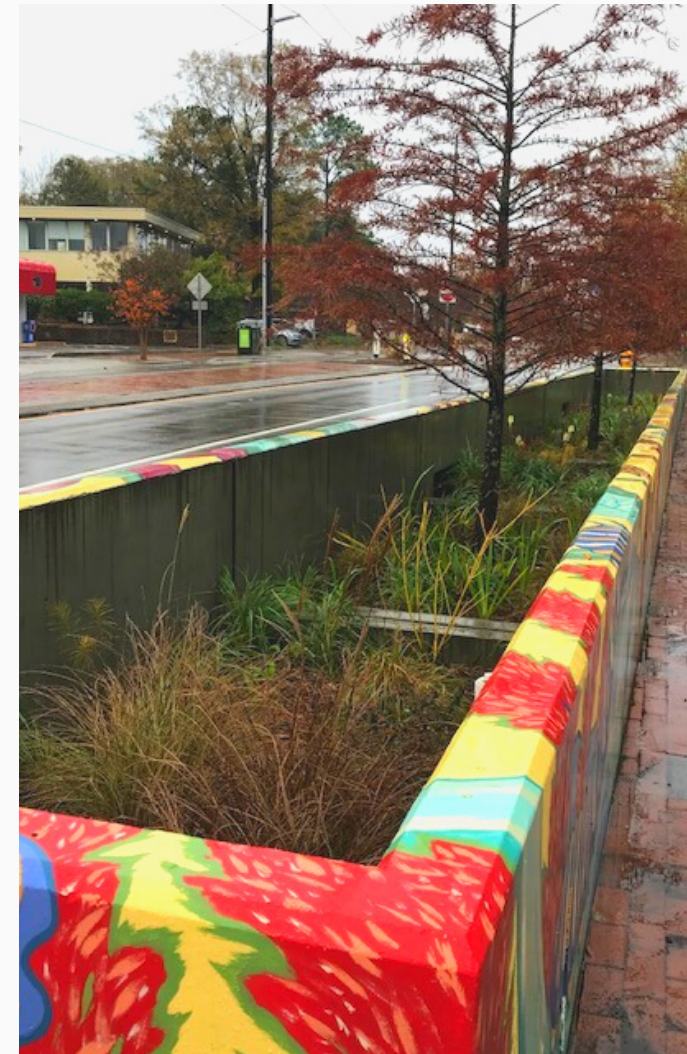


HILLSBOROUGH ST. RAIN GARDEN

A Live It Up Hillsborough Street Initiative
with NC State University Department of
Horticultural Science - Landscape Design



Plants are placed and ready to be planted

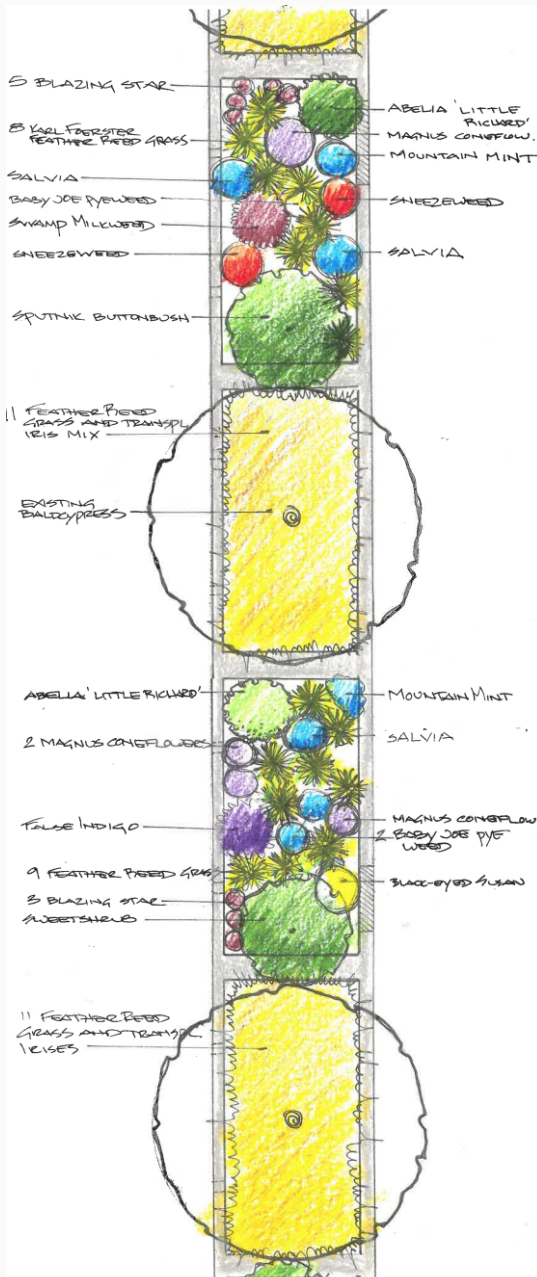


design/build projects provide invaluable
learning opportunities for students

Anne Spafford, MLA, ASLA
Associate Professor
Department of Horticultural Science
NC State University
amspaffo@ncsu.edu

SIDEWALK

HILLSBOROUGH STREET



Quick final plan (partial) showing sections of
feather reed grass/iris mix under the existing baldcypresses
alternating with sections of high plant diversity

J. Edwards, A. Hausle, C. Helms, T. Jackson, C. Kennedy,
N. Perkins, L. Rosser, M. Tack, J. Tinker, and A. Spafford
NCSU - HS416/516, Planting Design, Fall 2021

RAIN GARDEN DESIGN

Nine students in HS416/516, Planting Design, analyzed the site, then developed individual designs that were presented to stakeholders. Based on stakeholder feedback, the best design ideas and plant choices were pulled into one final plan.

Plants were selected based on:

- appropriateness for the rain garden site in terms of sun/shade and soil, etc.,
- ability to thrive in short term flooding and long periods of drought once established,
- providing a mix of plant types to create as high performing a rain garden as possible throughout the year,
- height (most plants will be taller than the concrete wall),
- seasonal interest and beauty, and
- ability to support native pollinators in terms of providing pollen and nectar as well as habitat

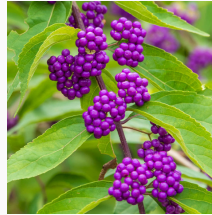
Most of the plants are native (or cultivars of native plants). Where non-natives are used, they are well-behaved, high performing in stormwater devices, and still provide valuable pollinator support.

The garden was installed in late November 2021 by the class and other volunteers. Here are some images of what to look forward to in the coming seasons:

Shrubs



Abelia



Beautyberry



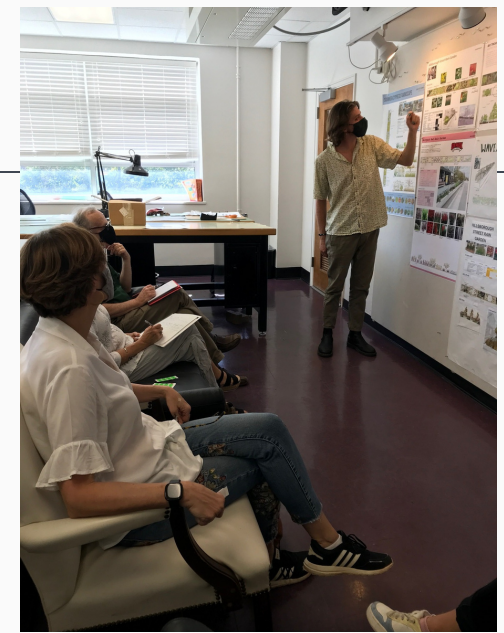
Sweetshrub



Redtwig Dogwood
(winter)



Yellowtwig Dogwood
(winter)

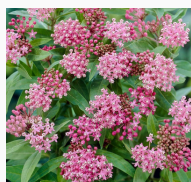


Student Locke Rosser presenting to stakeholders

Perennials & Ornamental Grasses



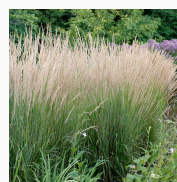
Bluestar (left: spring, right: fall)



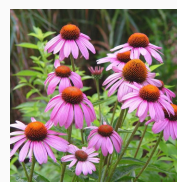
Swamp Milkweed



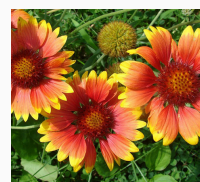
False Indigo



Feather Reed Grass



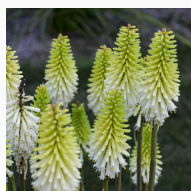
Coneflower



Blanketflower



Sneezeweed



Redhot Poker



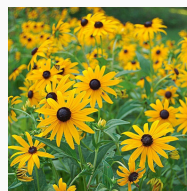
Blazing Star



Maidengrass



Mountain Mint



Blackeyed Susan

PLANT LIST			Seasonal Interest			
Scientific Name	Common Name	Plant Type	sp	su	f	w
<i>Abelia X grandiflora</i> 'Little Richard'	Little Richard Glossy Abelia	evergreen shrub				
<i>Amsonia hubrichtii</i>	Blue Star	perennial				
<i>Asclepias incarnata</i>	Swamp Milkweed	perennial				
<i>Baptisia australis</i>	False Indigo	perennial				
<i>Calamagrostis</i> 'Karl Foerster'	Karl Foerster Feather Reed Grass	ornamental grass				
<i>Callicarpa americana</i>	American Beautyberry	deciduous shrub				
<i>Calycanthus floridus</i>	Sweetshrub, Allspice	deciduous shrub				
<i>Cornus sericea</i> 'Bailey'	Bailey's Redtwig Dogwood	deciduous shrub				
<i>Cornus sericea</i> 'Budd's Yellow'	Budd's Yellowtwig Dogwood	deciduous shrub				
<i>Echinacea purpurea</i>	Purple Coneflower	perennial				
<i>Echinacea purpurea</i> 'Magnus'	Magnus Coneflower	perennial				
<i>Eupatorium dubium</i> 'Baby Joe'	Baby Joe Pye Weed	perennial				
<i>Galliardia aristata</i>	Blanket Flower	perennial				
<i>Helenium autumnale</i> 'Red Shades'	Red Shades Sneezeweed	perennial				
<i>Kniphofia</i> 'Lady Luck'	White Red Hot Poker	perennial				
<i>Liatris spicata</i>	Blazing Star	perennial				
<i>Miscanthus</i> 'Morning Light'	Maiden grass	orn. grass				
<i>Pycnanthemum muticum</i>	Short-toothed Mountain Mint	perennial				
<i>Rudbeckia fulgida</i> 'Goldsturm'	Black-eyed Susan	perennial				
<i>Salvia elegans</i>	Pineapple Sage	tender perennial				
Already on site:						
<i>Taxodium distichum</i>	Common Baldcypress	deciduous tree				
<i>Iris</i> spp.	Irises-Japanese most likely	perennial				